

---

# Case Study

## Bricken Arcade

### New York City



#### Project Bricken Arcade – Two Adjoining Building Lobbies

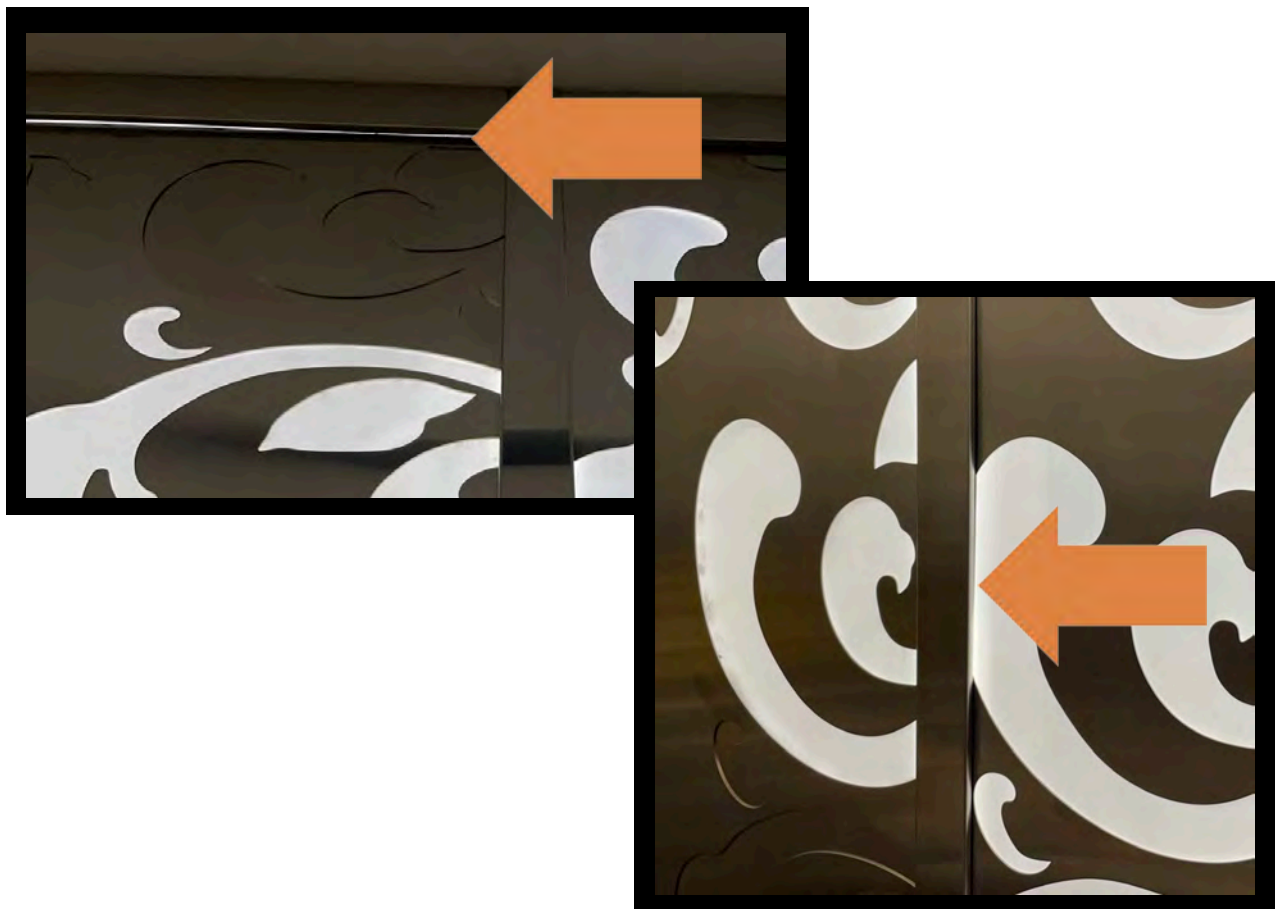
The Bricken Arcade project is an interesting example of how the EOS Metal complete solution (LightPanels with decorative metal patterns on top) eliminates installation hassles and confusion, while resulting in superior and stellar installations – and how it further beautifies even upscale and historically-significant, high-profile public spaces.

---

Up until now, the classic challenge with backlit metal pattern material in architectural spaces has been the *integration* between separately-sourced materials from two different suppliers. On the one hand, you have the lighting supplier (e.g. EOS Light), and on the other hand you have the separate metal pattern supplier.

The metal raw materials have not typically been manufactured with the lighting in mind, so developing a solution for them to work together on a case-by-case basis for every new project can be a very time-consuming challenge.

In this lobby case study, you'll notice that, in the process of installing the materials, there had been a challenge with the brightness of LEDs along the frame edging of the metallic patterns, as well as trying to be sure they were fully obscured and invisible behind the separate segments of metal. These obstacles were overcome, but it added time and effort to the job.





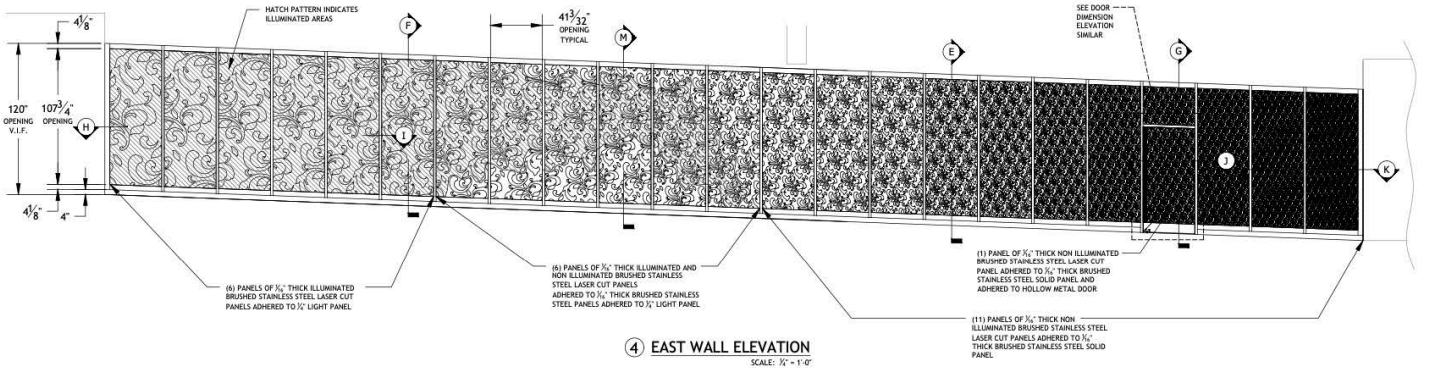
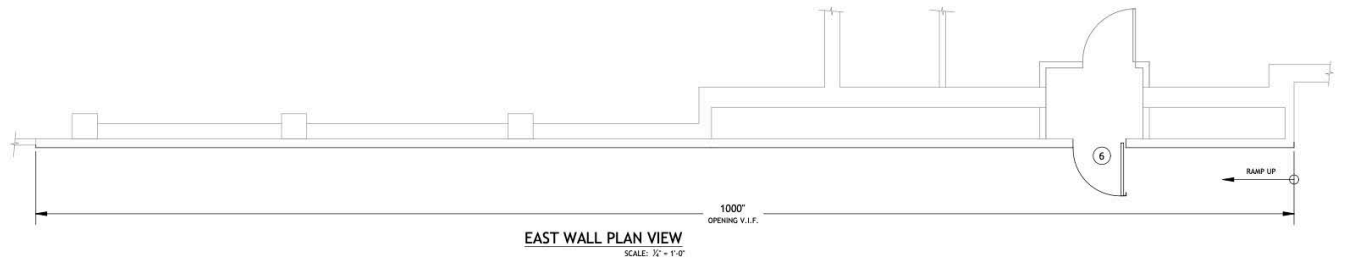
Ultimately, as you can see from the photographs, the job did end up looking wonderful for this conjoined lobby of two historic New York City buildings.

However, this backlit metal pattern job preceded the availability of our turnkey complete lighting solution, so the installers needed to work with independent materials from multiple sources. Without EOS Metal, it was not without its installation issues that could've been minimized or completely eliminated... Just unbox the EOS Metal LightPanels, plug them in and hang them. No assembly required. No coordination with more than one supplier. EOS has already done all of the legwork to reduce confusion and save time. Why reinvent the wheel?

Select your pattern from our catalog of hundreds or submit your own custom pattern, choose indoor or outdoor light panels, or Color Tuning, Dim-to-Warm, RGB or RGBW. Pick a metal finish color or provide a RAL number. Indicate your dimensions or even specify situations where there is a slanted portion of your wall, or an area where sprinklers or fire alarm must protrude. We can work around all of these customizations to deliver a finished product out of the box that makes installation a breeze.

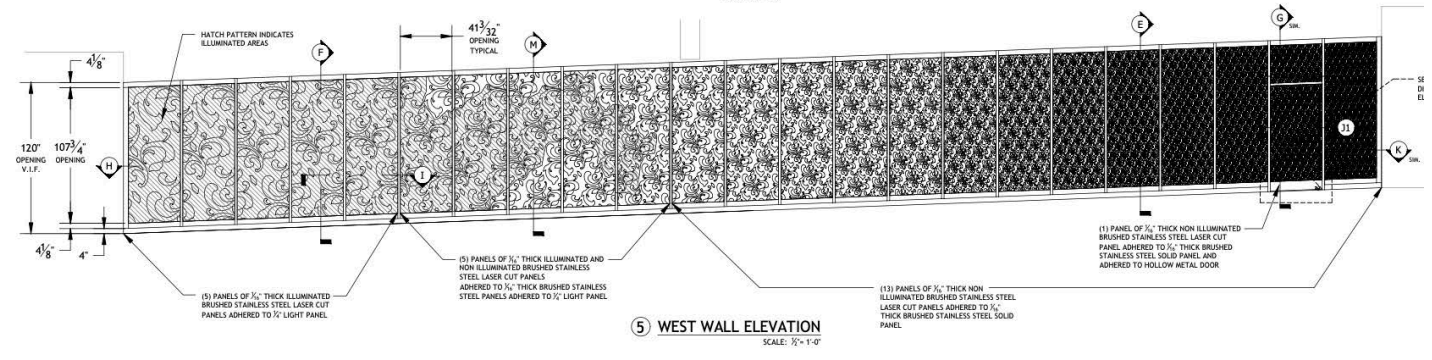
Now, with EOS Metal, gorgeous results like the ones you see here can be yours simply, quickly and affordably!

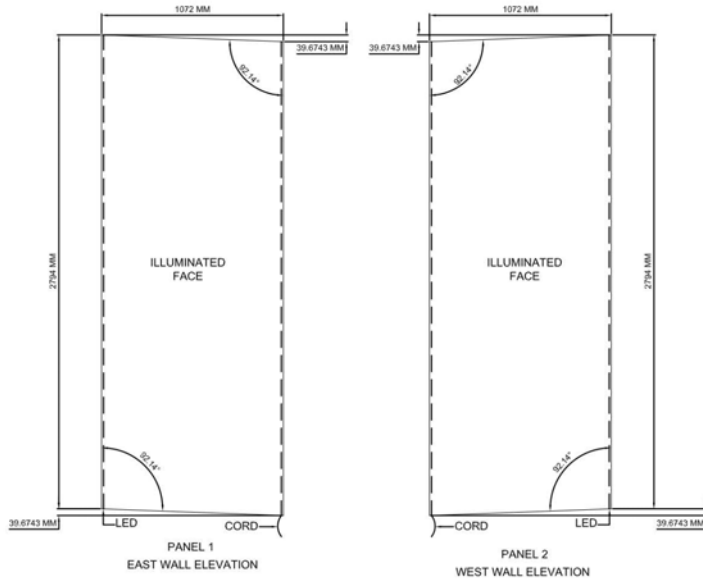




**SPECIAL ARTWORK NOTE:**  
THESE ELEVATIONS ARE A REPRESENTATION ONLY OF THE DECORATIVE PANELS BASED ON THE CAD FILE PROVIDED TO DOORTEC. EXACT ARTWORK FOR EACH INDIVIDUAL PANEL MUST BE PROVIDED BY THE ARCHITECT / DESIGNER IN ORDER FOR THESE PANELS TO GO INTO PRODUCTION

**SPECIAL GRAIN DIRECTION NOTE:**  
FRONT LASER CUT STAINLESS STEEL PATTERN CUT PANELS TO HAVE VERTICAL GRAIN DIRECTION. BACK SOLID STAINLESS STEEL PANELS TO HAVE HORIZONTAL GRAIN DIRECTION PENDING APPROVED CHANGE ORDER.





RFQ: 21160

PANEL 1	MODEL NO: LF-12-110-43-SP
TYPE	AF29
QTY.	12
SIZE	2794 MM X 1072 MM X 9 MM
LED PLACEMENT	2
SIDE ILLUMINATED	1
COLOR	4400K
VOLTAGE	12 V
WATTAGE	92 W

PANEL 2	MODEL NO: LF-12-110-43-SP
TYPE	AF29
QTY.	10
SIZE	2794 MM X 1072 MM X 9 MM
LED PLACEMENT	2
SIDE ILLUMINATED	1
COLOR	4400K
VOLTAGE	12 V
WATTAGE	92 W

REV	DESCRIPTION	REVISIONS	ECN	ECR	DATE	APP

**EAST WALL PANELS**

PRODUCT CODE:	PRODUCT CODE: LP-SP-108 X 41.25-2SL-DW-DHW
PANEL #:	PANEL 1,2,4,5,6,8,9,10,12
TYPE	EOS LIGHT PANEL SYSTEM
QTY.	9
SIZE	108" X 41.25" X 0.375"
LED PLACEMENT (EDGES)	2
FACES ILLUMINATED	1
COLOR	4400K - DAYLIGHT WHITE
VOLTAGE	12 V
WATTAGE	90 W

PRODUCT CODE:	PRODUCT CODE: LP-SP-108 X 41.3125-2SL-DW-DHW
PANEL #:	PANEL 3,7,11
TYPE	EOS LIGHT PANEL SYSTEM
QTY	3
SIZE	108" X 41.3125" X 0.375"
LED PLACEMENT (EDGES)	2
FACES ILLUMINATED	1
COLOR	4400K - DAYLIGHT WHITE
VOLTAGE	12 V
WATTAGE	90 W

**APPROVED**  **REVISE AND RESUBMIT**  **REJECTED**  **APPROVED BY:** \_\_\_\_\_ **DATED:** \_\_\_\_\_

<p>UNLESS OTHERWISE SPECIFIED DIMENSIONS ARE IN INCHES</p> <p>DECIMALS: X ± .063 .XX ± .031 .XXX ± .015</p> <p>ANGLES: ± 1/2"</p> <p>HOLES: UNDER .500 ± .005 OVER .001 ± .010</p> <p>FINISH: _____</p>	<p>APPROVALS</p> <p>DRAWN: <b>ADV</b></p> <p>CHKD: _____</p> <p>ENGR: _____</p>	<p>DATE: 12.07.15</p>	<p>PROJECT NUMBER: 21160</p> <p>PROJECT TITLE: 14079 BRICKEN LOBBY</p> <p>KAHN ARCHITECTURE &amp; DESIGN</p> <p><b>eos</b> 1085 UPLANDER WAY, SUITE A DUBLIN, CA 94568 TEL: 318.618.9226 FAX: 318.618.9287 WEB: WWW.LIGHTWAVE.COM</p>		
	<p>SHEET No. <b>SH-1</b></p>			<p>PART NO. _____</p> <p>SIZE: <b>A</b></p> <p>DWG NO. _____</p> <p>REV _____</p>	
	<p>DO NOT SCALE PRINT</p>			<p>SCALE: 1:50</p>	<p>SHEET: 1 OF 2</p>

THE ACCOMPANYING FILES ARE SUPPLIED AS A MATTER OF COURTESY. THE DATA IS PROVIDED "AS IS" WITHOUT WARRANTY OF ANY KIND EITHER EXPRESSED OR IMPLIED. ANY PERSON(S) OR ORGANIZATION(S) MAKING USE OF OR RELYING UPON THIS DATA, IS RESPONSIBLE FOR CONFIRMING ITS ACCURACY AND COMPLETENESS. DUE TO A PROGRAM OF CONTINUOUS IMPROVEMENT, WE RESERVE THE RIGHT TO MAKE ANY VARIATION IN DESIGN OR CONSTRUCTION TO THE EQUIPMENT DESCRIBED. THIS DRAWING IS THE PROPERTY OF EOS AND CONTAINS PRIVILEGED OR CONFIDENTIAL INFORMATION. YOU WILL NOT DISCLOSE, USE, DISSEMINATE, DISTRIBUTE OR COPY THIS DRAWING FOR PURPOSES OTHER THAN WHAT IT IS INTENDED FOR.