

---

# Case Study

## Buchanan Ingersoll & Rooney Pittsburgh, Pennsylvania



Buchanan Ingersoll & Rooney is a multi-award-winning, nationwide law firm with over 450 attorneys across 15 offices who represent some of the highest profile and innovative companies in the nation, including half of the Fortune 100. In Pittsburgh, Buchanan Ingersoll & Rooney occupies offices in an historic Flemish-Gothic structure built in 1915-16 called the Union Trust Building. Its rich history and distinctive rooftop make it perfectly suited for a high-profile firm such as theirs. When they needed to design their lobby appropriately to create a magnificent first impression, they relied on EOS Light to get the job done.

---

EOS Light was entrusted with the creation of an entire lighting environment for the Buchanan Ingersol & Rooney lobby entrance area. EOS decided to use the color-tunable Cloud Luminaire product for this job. Cloud Luminaires are squared ceiling fixtures with a clean, modern aesthetic for indoor locations that can either be surface mounted or suspended. In this case, the designer felt that a suspended look would lend to greater visual impact, distinction and memorability – to create an impression as people first entered the space.

The tunable white Cloud Luminaires are DMX/RDM dimmable and operate on a timeclock so that they can adjust intensity and the color quality of the LightPanels as the day goes on.

To create different moods, the panels can be simultaneously shifted from between 2400 - 6000K or run a show to cycle through different CCTs as desired.



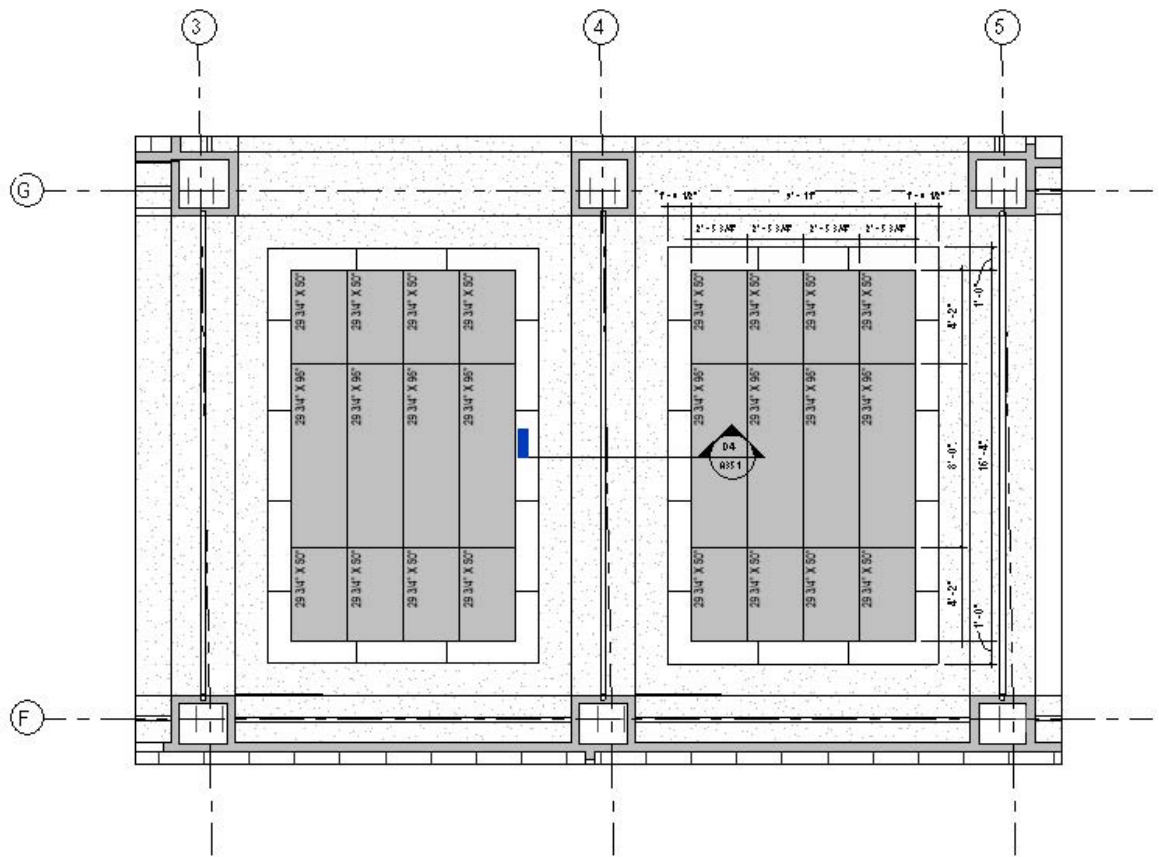
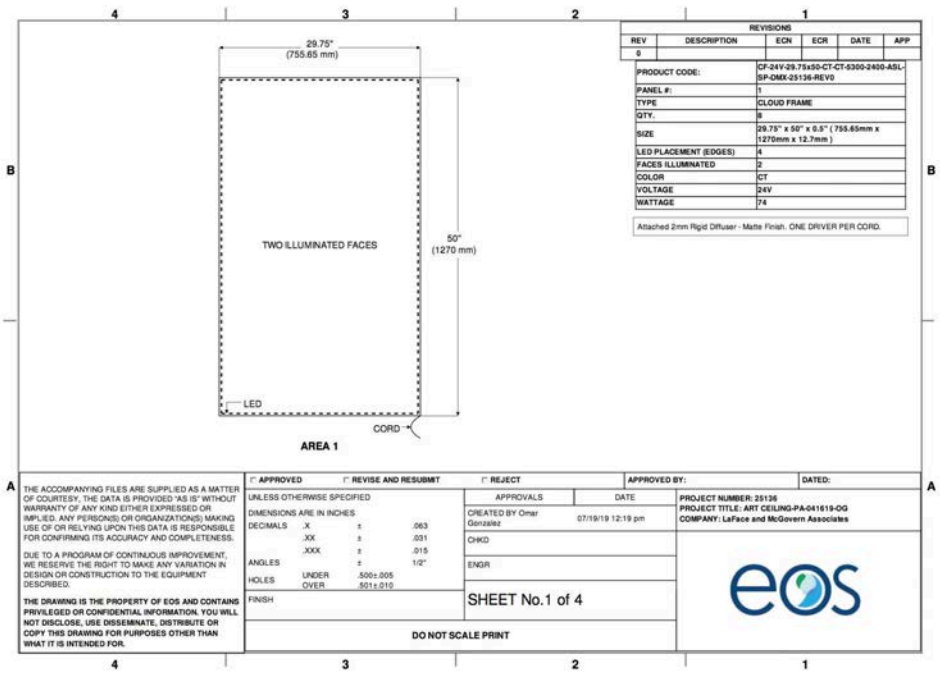
---

Not only did EOS supply the 24 custom, oversized, suspended luminaires (that comprise two separate ceiling areas of 10 feet x 16 feet), but we were also asked to print the artwork directly onto our diffuser as media.

The EOS team personally oversaw printing and assembly of the ceiling mural design directly onto the diffuser as a completely custom project. This unique, one-off assignment was custom-sized, custom-colored and custom-executed, which led to spectacular results.



It's EOS Light's attention to detail and long history of high-profile successes that inspire trust. Let EOS do the same for you.



**D1 SECOND FLOOR - CEILING PANEL LAYOUT**  
 1/8" = 1'-0"