



Retail
Hospitality
Healthcare
Architectural Lighting
Signage
Casino Design
Residential

eoslight.com

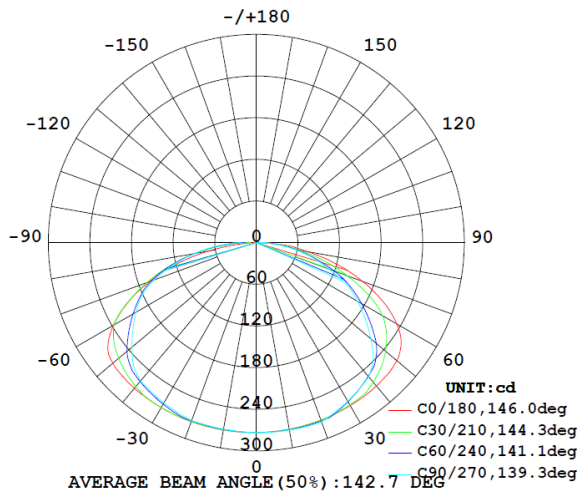
LUMINAIRE PHOTOMETRIC TEST REPORT

2700k - 48 x 24- HP - 2SL_IESNA95

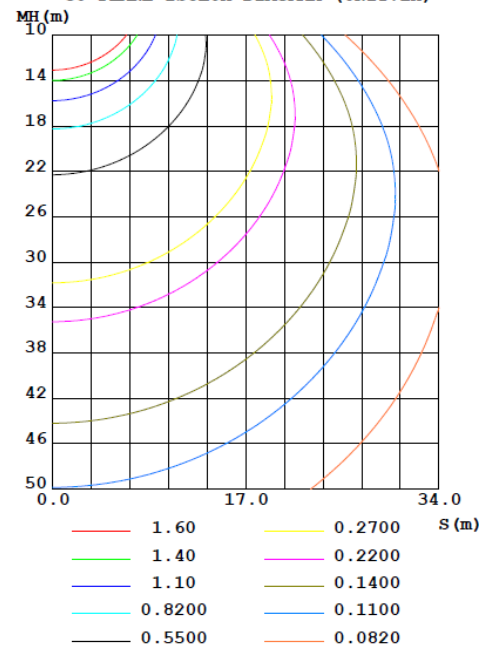
NAME: LP-24V-48x24-2700-2SL-HP	TYPE: EOSLight Panel	WEIGHT: 4000G
SPEC.:	DIM.:	SERIAL No.: EOS
MFR.: EOS	SUR.:	Shielding Angle:

DATA OF LAMP		PHOTOMETRIC DATA				Eff: 36.04 lm/W
MODEL		Imax(cd)	275.6	S/MH(C0/180)	1.54	
NOMINAL POWER(W)		LOR(%)	274.0	S/MH(C90/270)	1.48	
RATED VOLTAGE(V)		TOTAL FLUX(lm)	1139.4	η UP,DN(C0-180)	0.0,130.7	
NOMINAL FLUX(lm)	415.896	CIE CLASS	DIRECT	η UP,DN(C180-360)	0.0,143.2	
LAMPS INSIDE	1	η up(%)	0.0	CIBSE SHR NOM	1.50	
TEST VOLTAGE(V)		η down(%)	274.0	CIBSE SHR MAX	1.55	

LUMINOUS INTENSITY DISTRIBUTION DIAGRAM



C0 PLANE ISOLUX DIAGRAM (UNIT: lx)



C Range: 0 - 360DEG
C Interval: 5.0DEG
Test Speed: HIGH
Temperature: 25.3DEG
Operators: DAMIN
Test Date: 2019-05-25

γ Range: 0 - 90DEG
 γ Interval: 0.5DEG
Test System: EVERFINE GO-2000A_V1 SYSTEM V2.0.293
Humidity: 65.0%
Test Distance: 9.180m [K=1.0000]
Remarks: DWY

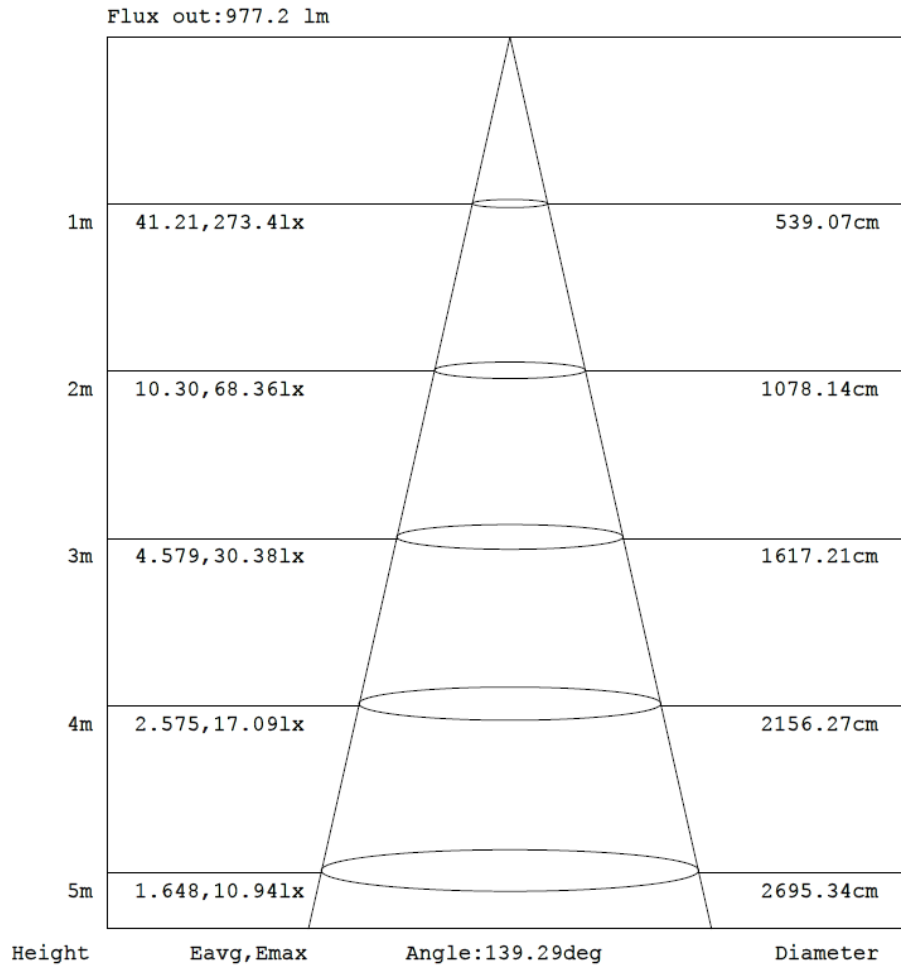


Retail
Hospitality
Healthcare
Architectural Lighting
Signage
Casino Design
Residential

eoslight.com

AAI Figure

NAME: LP-24V-48x24-2700-2SL-HP	TYPE: EOSLight Panel	WEIGHT: 4000G
SPEC.:	DIM.:	SERIAL No.: EOS
MFR.: EOS	SUR.:	Shielding Angle:



Note: The Curves indicate the illuminated area and the average illumination when the luminaire is at different distance.

C Range: 0 - 360DEG
C Interval: 5.0DEG
Test Speed: HIGH
Temperature: 25.3DEG
Operators: DAMIN
Test Date: 2019-05-25

γ Range: 0 - 90DEG
 γ Interval: 0.5DEG
Test System: EVERFINE GO-2000A_V1 SYSTEM V2.0.293
Humidity: 65.0%
Test Distance: 9.180m [K=1.0000]
Remarks: DWY





γ Range: 0 - 90DEG
γ Interval: 0.5DEG
Test System: EVERFINE GO-2000A_V1 SYSTEM V2.0.293
Humidity: 65.0%
Test Distance: 9.180m [K=1.0000]
Remarks: DWY



