



Retail  
Hospitality  
Healthcare  
Architectural Lighting  
Signage  
Casino Design  
Residential

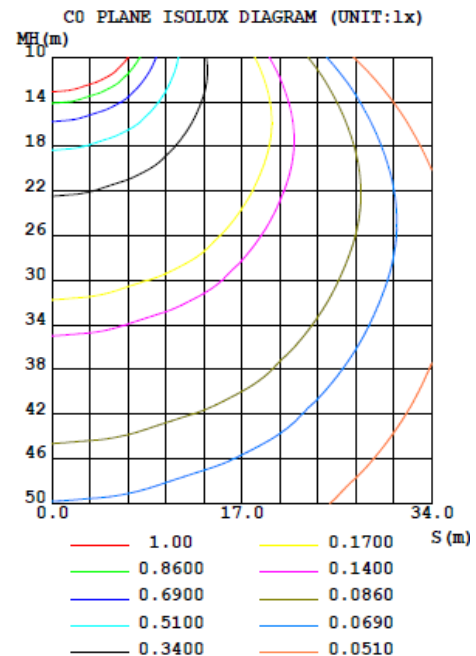
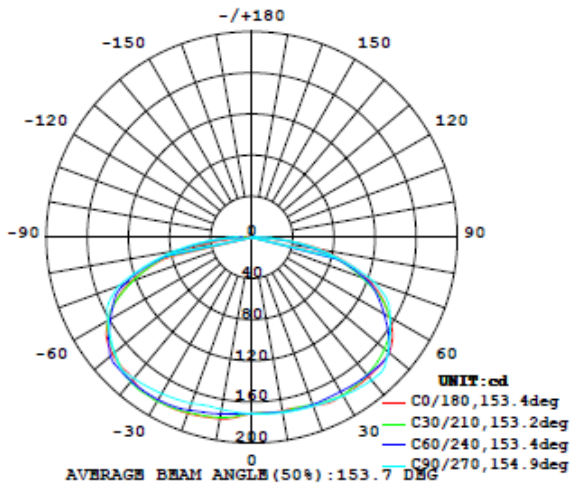
eoslight.com

## LUMINAIRE PHOTOMETRIC TEST REPORT EOS-CRYSTAL-2700k-24 x 24-SP-4SL\_IESNA95

NAME: EOS- CRYSTAL- CP-24V-24x24-2700-ASL-SP	TYPE: EOS Crystal Panel	WEIGHT:
SPEC.:	DIM.:	SERIAL No.:
MFR.: EOS	SUR.:	Shielding Angle:

DATA OF LAMP		PHOTOMETRIC DATA				Eff: 26.59 lm/W
MODEL		Imax(cd)	186.3	S/MH(C0/180)	1.61	
NOMINAL POWER(W)	30.9	LOR(%)	92.5	S/MH(C90/270)	1.59	
RATED VOLTAGE(V)	24	TOTAL FLUX(lm)	829.77	$\eta$ UP,DN(C0-180)	0.0,45.5	
NOMINAL FLUX(lm)	897.096	CIE CLASS	DIRECT	$\eta$ UP,DN(C180-360)	0.0,47.0	
LAMPS INSIDE	1	$\eta$ up(%)	0.0	CIBSE SHR NOM	1.75	
TEST VOLTAGE(V)	24.28	$\eta$ down(%)	92.5	CIBSE SHR MAX	1.75	

LUMINOUS INTENSITY DISTRIBUTION DIAGRAM



C Range: 0 - 360DEG  
C Interval: 5.0DEG  
Test Speed: HIGH  
Temperature: 25.3DEG  
Operators: DAMIN  
Test Date: 2019-06-21

$\gamma$  Range: 0 - 90DEG  
 $\gamma$  Interval: 0.5DEG  
Test System: EVERFINE GO-2000A\_V1 SYSTEM V2.0.293  
Humidity: 65.0%  
Test Distance: 9.180m [K=1.0000]  
Remarks: DWY

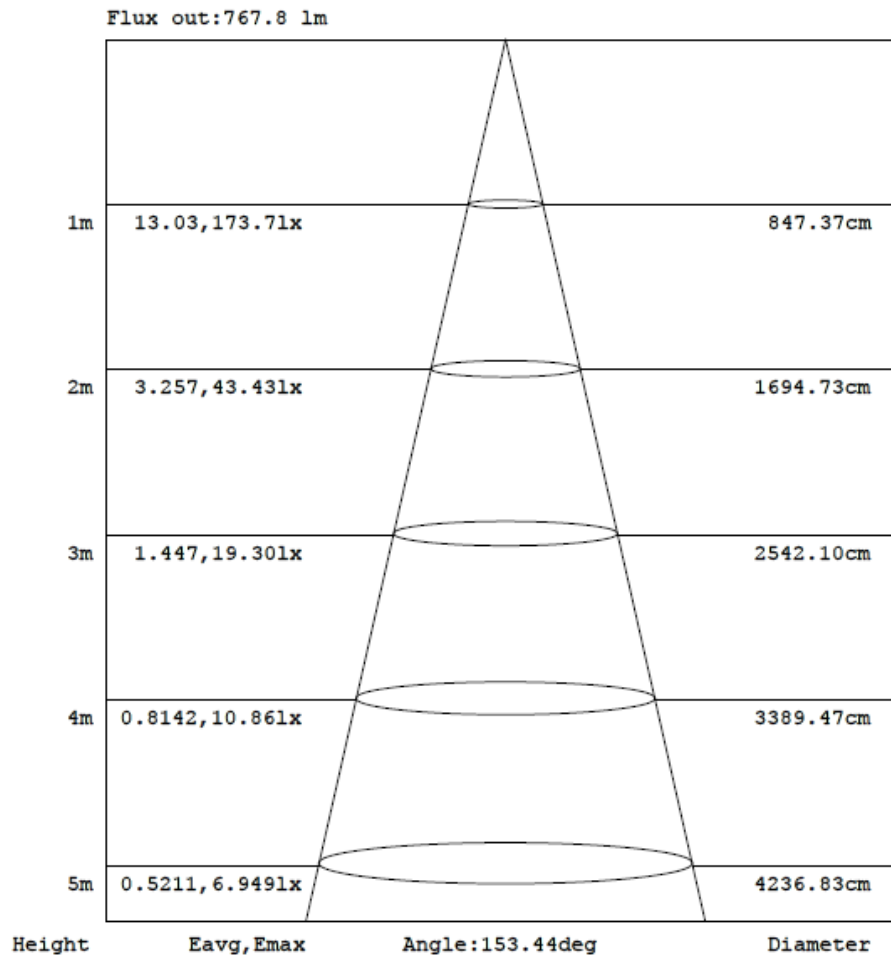


Retail  
Hospitality  
Healthcare  
Architectural Lighting  
Signage  
Casino Design  
Residential

eoslight.com

### AAI Figure

NAME: EOS- CRYSTAL-CP-24V-24x24-2700-ASL-SP	TYPE: EOS Crystal Panel	WEIGHT:
SPEC.:	DIM.:	SERIAL No.:
MFR.: EOS	SUR.:	Shielding Angle:



Note: The Curves indicate the illuminated area and the average illumination when the luminaire is at different distance.

C Range: 0 - 360DEG  
C Interval: 5.0DEG  
Test Speed: HIGH  
Temperature: 25.3DEG  
Operators: DAMIN  
Test Date: 2019-06-21

$\gamma$  Range: 0 - 90DEG  
 $\gamma$  Interval: 0.5DEG  
Test System: EVERFINE GO-2000A\_V1 SYSTEM V2.0.293  
Humidity: 65.0%  
Test Distance: 9.180m [K=1.0000]  
Remarks: DWY



**γ Range:** 0 - 90DEG  
**γ Interval:** 0.5DEG  
**Test System:** EVERFINE GO-2000A\_V1 SYSTEM V2.0.293  
**Humidity:** 65.0%  
**Test Distance:** 9.180m [K=1.0000]  
**Remarks:** DWY





**γ Range:** 0 - 90DEG  
**γ Interval:** 0.5DEG  
**Test System:** EVERFINE GO-2000A\_V1 SYSTEM V2.0.293  
**Humidity:** 65.0%  
**Test Distance:** 9.180m [K=1.0000]  
**Remarks:** DWY

