



Retail
Hospitality
Healthcare
Architectural Lighting
Signage
Casino Design
Residential

eoslight.com

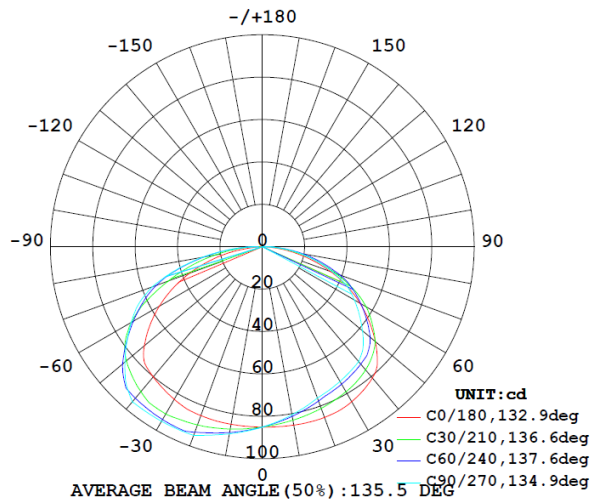
LUMINAIRE PHOTOMETRIC TEST REPORT

2700k - 36 x 2- SP - 1SL_IESNA95

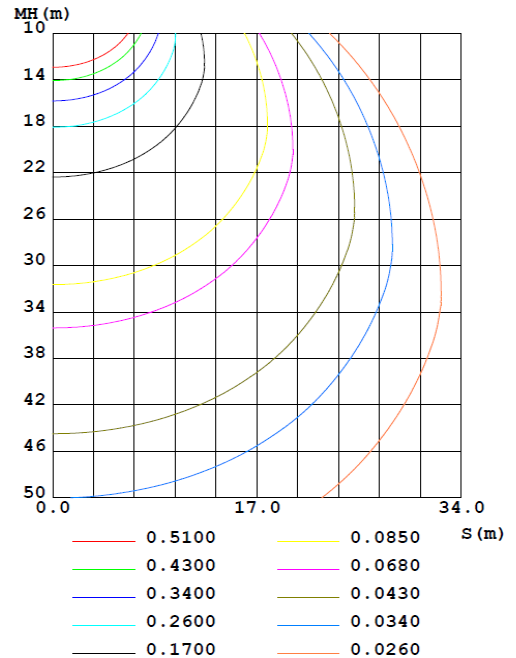
NAME: LP-24V-36x2-2700-1SL-SP	TYPE:EOSLightPanel	WEIGHT:300G
SPEC.:	DIM.:	SERIAL No.:EOS
MFR.: EOS	SUR.:	Shielding Angle:

DATA OF LAMP		PHOTOMETRIC DATA				Eff: 24.93 lm/W
MODEL		Imax(cd)	95.55	S/MH(C0/180)	1.47	
NOMINAL POWER(W)	13.6	LOR(%)	36.5	S/MH(C90/270)	1.69	
RATED VOLTAGE(V)	24	TOTAL FLUX(lm)	343.25	η UP,DN(C0-180)	0.0,16.3	
NOMINAL FLUX(lm)	939.421	CIE CLASS	DIRECT	η UP,DN(C180-360)	0.0,20.2	
LAMPS INSIDE	1	η up(%)	0.0	CIBSE SHR NOM	1.75	
TEST VOLTAGE(V)	24.4	η down(%)	36.5	CIBSE SHR MAX	1.75	

LUMINOUS INTENSITY DISTRIBUTION DIAGRAM



C0 PLANE ISOLUX DIAGRAM (UNIT:lx)



C Range: 0 - 360DEG
C Interval: 5.0DEG
Test Speed: HIGH
Temperature: 25.3DEG
Operators: DAMIN
Test Date: 2019-05-27

γ Range: 0 - 90DEG
 γ Interval: 0.5DEG
Test System: EVERFINE GO-2000A_V1 SYSTEM V2.0.293
Humidity: 65.0%
Test Distance: 9.180m [K=1.0000]
Remarks: DWY

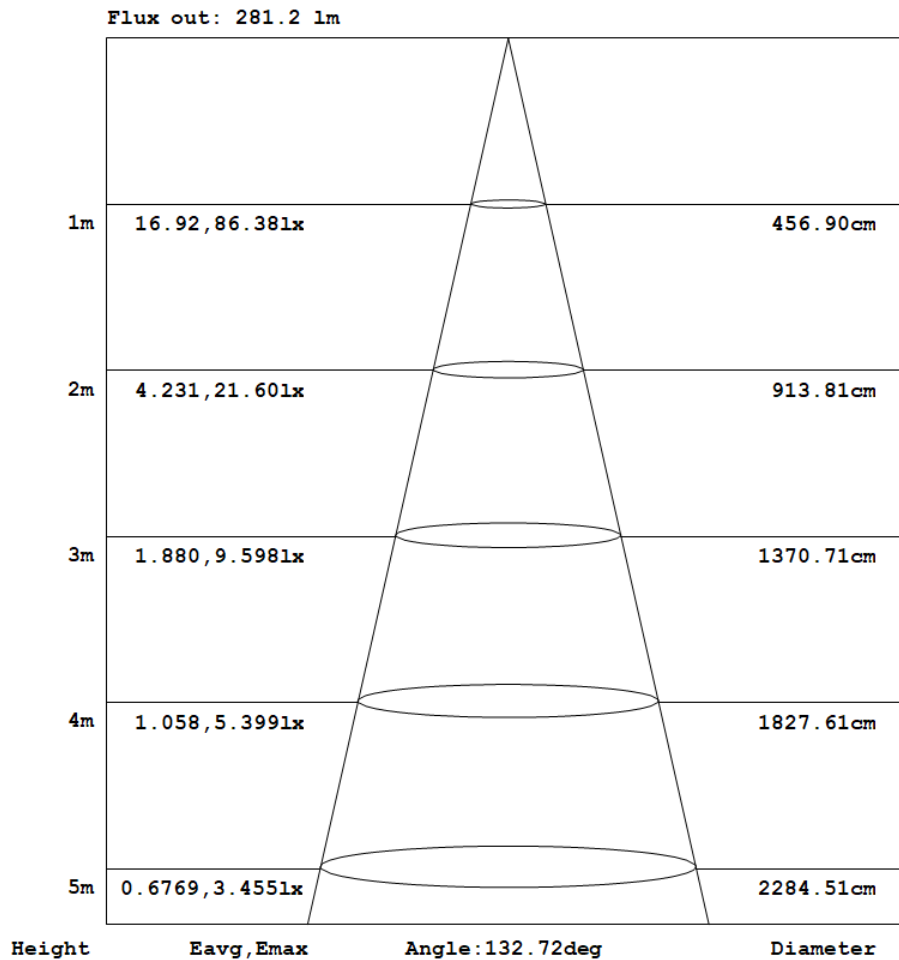


Retail
Hospitality
Healthcare
Architectural Lighting
Signage
Casino Design
Residential

eoslight.com

AAI Figure

NAME: LP-24V-36x2-2700-1SL-SP	TYPE:EOSLightPanel	WEIGHT:300G
SPEC.:	DIM.:	SERIAL No.:EOS
MFR.:EOS	SUR.:	Shielding Angle:



Note: The Curves indicate the illuminated area and the average illumination when the luminaire is at different distance.

C Range: 0 - 360DEG
C Interval: 5.0DEG
Test Speed: HIGH
Temperature: 25.3DEG
Operators: DAMIN
Test Date: 2019-05-27

γ Range: 0 - 90DEG
γ Interval: 0.5DEG
Test System: EVERFINE GO-2000A_V1 SYSTEM V2.0.293
Humidity: 65.0%
Test Distance: 9.180m [K=1.0000]
Remarks: DWY







γ Range: 0 - 90DEG
γ Interval: 0.5DEG
Test System: EVERFINE GO-2000A_V1 SYSTEM V2.0.293
Humidity: 65.0%
Test Distance: 9.180m [K=1.0000]
Remarks: DWY



γ Range: 0 - 90DEG
γ Interval: 0.5DEG
Test System: EVERFINE GO-2000A_V1 SYSTEM V2.0.293
Humidity: 65.0%
Test Distance: 9.180m [K=1.0000]
Remarks: DWY