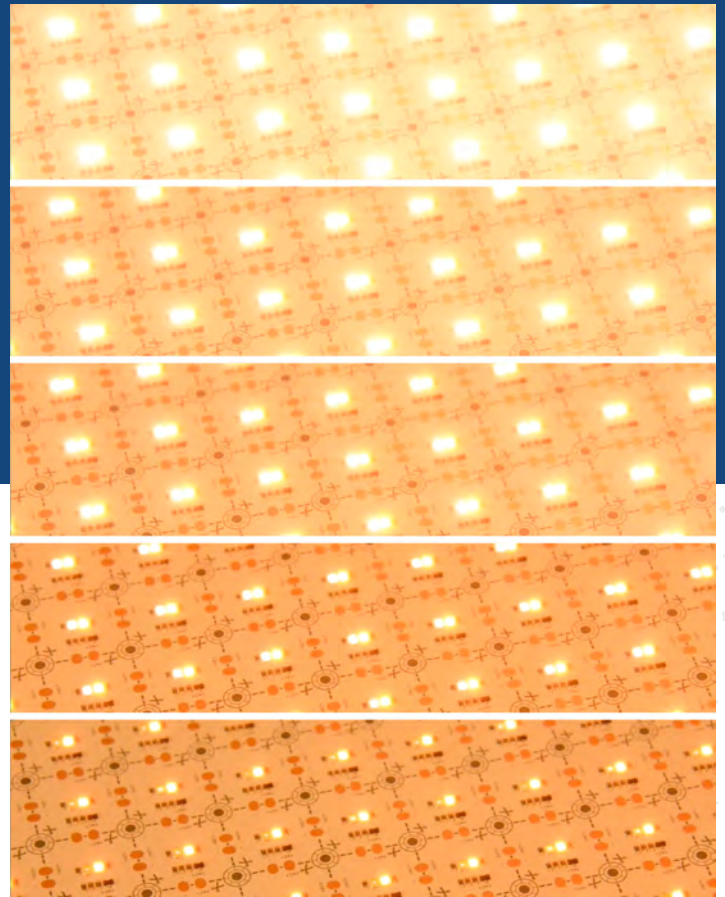
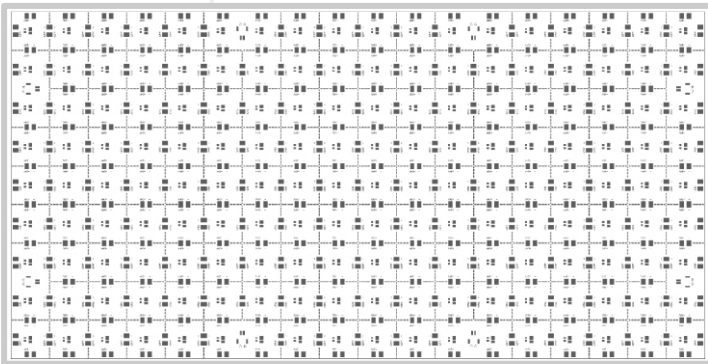


DIM-TO-WARM BASIC LightPaper

- Thin, lightweight, flexible, cuttable light sheets
- Either 3000K or 2500K at full brightness; 1800K dimmed
- Suited for shallow setback starting at 1/4"
- For walls, ceilings, curved structures and custom shapes
- 90+ CRI



The versatility of DIM-TO-WARM BASIC eos LightPaper allows use in a large number of applications:



HOSPITALITY



RESIDENTIAL



COMMERCIAL INTERIOR



CUSTOM FIXTURES



MILLWORK



TASK LIGHTING



LOGOS AND SIGNAGE



COVE LIGHTING



RETAIL



BRANDING



ACCENT LIGHTING



HEALTHCARE

General Specifications

FLEXIBLE TECHNOLOGY :

LightPaper is versatile, flexible and thin LED technology that can wrap around curved surfaces or be cut into custom shapes

PAPER SIZE :

Each sheet is 19" x 9.5" and seamlessly expandable via Molex® connectors up to 80W per driver. LightPaper can be cut at the factory or in the field.

SETBACK :

Dim-to-Warm Basic LightPaper is suited for shallow setback starting at 1/4", depending on the transparency of the illuminated material; most can be evenly illuminated w/ 1 - 2" setback. We fully recommend creating a mock up prior to specifying the job. Contact your EOS agent for assistance.

LONG LIFE :

Over 50,000 hours = Nearly 12 years based on 12 hours a day. Once installed, LightPaper is virtually maintenance free.

CRI :

90+ CRI

POWER OPTIONS:

24VDC Adapter

DRIVER INPUT VOLTAGE :

24VDC/120V-277V Universal AC Input

LUMENS & WATTAGE :

Wattage options from 2 - 13 Watts, with Lumen Packages from 150-1100+ Lumens

DIMMABLE :

LightPaper is dimmable when matched with Dimmable Power Supplies. (TRIAC, DMX/DALI)

LEDs :

ANSI Binned LEDs from Tier 1 Suppliers LED CRI > 90+ LED CRT -
3000K- 1800K and
2500K - 1800K

WIRE GAUGE:

20 AWG Wire

DAMP LOCATION :

LightPaper is Damp Location Rated when driven with a Class 2 Power Supply

HOSPITAL AND MRI SAFE :

The system contains non-ferrous materials, making LightPaper safe for MRI suites. The LightPaper Power supply must be installed remotely, up to 30 feet from the application.

SERVICE AND INSTALLATION :

LightPaper is field serviceable, and can be precut by our production team to customer specifications.

LIMITED WARRANTY :

3 Years - See Website for full details.



Wattage options from 2 - 13 Watts, with Lumen Packages from 150-1100+ Lumens



Dimmable, energy-efficient and cool-running



Lightweight, Easy-Install



Quick, easy installation in indoor applications



APPROVALS AND CERTIFICATIONS:

The LightPaper System is UL listed for Architectural applications and UL recognized for signage. All power supplies are UL / ETL listed.



DIMMABLE



DAMP LOCATION



LOW VOLTAGE LUMINAIRE
E480527



E467626



RoHS

Molex is a registered trademark of Molex, LLC.





Product Specification Ordering Form

NAME:	PROJECT NAME:	ADDRESS:
PHONE:	PROJECT LOCATION:	CITY:
EMAIL:	ANTICIPATED DELIVERY DATE:	ZIP CODE:
COMPANY NAME:	PROJECT SPECIFIER:	RUSH PROJECT: <input type="checkbox"/> Yes <input type="checkbox"/> No

A	B	C	D	E	F	G1	G2	H	I	J
LIGHTPAPER	FLEXIBLE	LED CHIP TYPE	INDOOR + LED QTY	COLOR TEMP	VOLTAGE	ILLUMINATED AREA LENGTH X HEIGHT (IN INCHES)		LIGHTPAPER TYPE	5-DIGIT PROJECT #	REVISION # Z
PPR	S	2835	1324	3000K-1800K	24	G1xG2		DTW300	YYYYY	REVZ

A G e' [7 B
PPR- LightPaper

B RIGIDITY
S- Flexible

C LED CHIP TYPE
2835 - Chip Type

D LED QTY
I - Damp Location/Indoor
324 - LED Chips per Sheet

E COLOR TEMP
3000K-1800K - Warm-Dimming
3000K to 1800K standard
2500K-1800K - Warm-Dimming
2500K to 1800K standard

F VOLTAGE
24- 24VDC (w/ UNV 120-277V Driver)

G ILLUMINATED AREA
G1 - Length in inches
G2 - Height in inches

H LIGHTPAPER TYPE
DTW - Dim-To-Warm
w/ lumen packages
indicated

I PROJECT #
YYYYY - 5-Digit Project #

J REVISION #
REVZ - REVISION # Z

Code for above Column H	Full LightPaper name and reference lumens	Precise Lumens Per Sq Ft	Wattage Per Sq Ft (with both colors at 100% power)
DTW1100	Basic Dim-To-Warm LightPaper 1100	1138	13
DTW650	Basic Dim-To-Warm LightPaper 650	650	8
DTW450	Basic Dim-To-Warm LightPaper 450	450	5
DTW300	Basic Dim-To-Warm LightPaper 300	300	4
DTW150	Basic Dim-To-Warm LightPaper 150	150	2



PROJECT NAME:

PROJECT LOCATION:

Please fill out the form

A	B	C	D	E	F	G1	G2	H	I	J
LIGHTPAPER	FLEXIBLE	LED CHIP TYPE	INDOOR + LED QTY	COLOR TEMP OPTIONS	VOLTAGE	ILLUMINATED AREA	LIGHTPAPER TYPE	5-DIGIT PROJECT #	REVISION #Z	
PPR	S	2835	I324	3000K-1800K	24	G1xG2	DTW300	YYYYY	REVZ	

1. What is the Application the LightPaper will be used for?
 E.g.: Hospitality, Retail, Signage Etc.

2. What are the LightPaper backlighting?
 E.g.: Stone, Graphic, Glass, Acrylic Etc.

3. Are there any installation details to review?

4. Is there an existing Dimming or Lighting Control System?
 If so, please provide Representative with information of the Control system (specs, manufacturer, etc.)

Additional information: