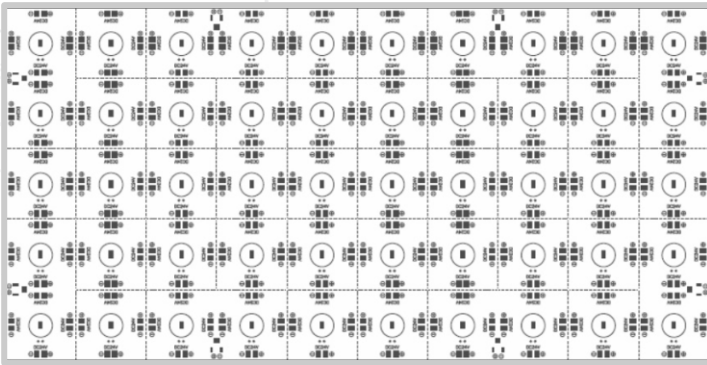


DIFFUSED LightPaper

- Thin, lightweight, flexible, cuttable light sheets
- 160° lensed LEDs suited for shallow setback starting at 1/4"
- For walls, ceilings, curved structures and custom shapes
- 2700K, 3000K, 3500K, 4000K or 6000K dedicated white
- Multiple Lumen Packages and Wattages
- 90+ CRI



The versatility of DIFFUSED eos LightPaper allows use in a large number of applications:



HOSPITALITY



RESIDENTIAL



COMMERCIAL INTERIOR



CUSTOM FIXTURES



MILLWORK



TASK LIGHTING



LOGOS AND SIGNAGE



COVE LIGHTING



RETAIL



BRANDING



ACCENT LIGHTING



HEALTHCARE

General Specifications

FLEXIBLE TECHNOLOGY :

LightPaper is versatile, flexible and thin LED technology that can wrap around curved surfaces or be cut into custom shapes

PAPER SIZE :

Each sheet is 19" x 9.5" and seamlessly expandable via Molex® connectors up to 80W per driver. Can be cut at the factory or in the field into 1.88" x 1.88" segments.

SETBACK :

Diffused LightPaper is suited for shallow setback starting at 1/4", depending on the transparency of the illuminated material; most can be evenly illuminated w/ 1 - 2" setback. We fully recommend creating a mock up prior to specifying the job. Contact your EOS agent for assistance.

LONG LIFE :

Over 50,000 hours = Nearly 12 years based on 12 hours a day. Once installed, LightPaper is virtually maintenance free.

CRI :

90+ CRI

POWER OPTIONS:

24VDC Adapter

DRIVER INPUT VOLTAGE :

24VDC/120V-277V Universal AC Input

LUMENS & WATTAGE (See page 3) :

Wattage options from 2 - 12 Watts, with Lumen Packages from 150-1000+ Lumens

DIMMABLE :

LightPaper is dimmable when matched with Dimmable Power Supplies. (0-10V, TRIAC)

LEDs :

ANSI Binned LEDs from Tier 1 Suppliers
LED CRI > 90+
LED CRT - 2700K, 3000K, 3500K, 4000K, 6000K

WIRE GAUGE:

20 AWG Wire

DAMP LOCATION :

LightPaper is Damp Location Rated when driven with a Class 2 Power Supply

HOSPITAL AND MRI SAFE :

The system contains non-ferrous materials, making LightPaper safe for MRI suites. The LightPaper Power supply must be installed remotely, up to 30 feet from the application.

SERVICE AND INSTALLATION :

LightPaper is field serviceable, and can be precut by our production team to customer specifications.

LIMITED WARRANTY :

3 Years - See Website for full details.



Up to 12W, >1000 Lumens per sq ft for signage & architecturally decorative objects



Dimmable, energy-efficient and cool-running



Lightweight, Easy-Install



Quick, easy installation in indoor applications



APPROVALS AND CERTIFICATIONS:

The LightPaper System is UL listed for Architectural applications and UL recognized for signage. All power supplies are UL / ETL listed.



DOWNLOAD INSTALLATION INSTRUCTIONS VIA YOUR SMARTPHONE'S CAMERA

Molex is a registered trademark of Molex, LLC.





Product Specification Ordering Form

NAME: PROJECT NAME: ADDRESS:

PHONE: PROJECT LOCATION: CITY:

EMAIL: ANTICIPATED DELIVERY DATE: ZIP CODE:

COMPANY NAME: PROJECT SPECIFIER: RUSH PROJECT: Yes No

A	B	C	D	E	F	G1	G2	H	I	J
LIGHTPAPER	FLEXIBLE	LED CHIP TYPE	INDOOR + LED QTY	COLOR TEMP	VOLTAGE	ILLUMINATED AREA LENGTH X HEIGHT (IN INCHES)		LIGHTPAPER TYPE	5-DIGIT PROJECT #	REVISION # Z
PPR	S	2835	150	2700K	24	G1xG2		DIFF650	YYYYY	REVZ

<p>A MATERIAL PPR- LightPaper</p> <p>B RIGIDITY S- Flexible</p> <p>C LED CHIP TYPE 2835 - Chip Type</p>	<p>D LED QTY I - Damp Location/Indoor 50 - LED Chips per Sheet</p> <p>E COLOR TEMP 2700K - CCT 3000K - CCT 3500K - CCT 4000K - CCT 6000K - CCT</p>	<p>F VOLTAGE 24- 24VDC (w/ UNV 120-277V Driver)</p> <p>G ILLUMINATED AREA G1 - Length in inches G2 - Height in inches</p>	<p>H LIGHTPAPER TYPE DIFF - Diffused w/lumen package indicated</p> <p>I PROJECT # YYYYY - 5-Digit Project #</p> <p>J REVISION # REVZ - REVISION # Z</p>
--	--	---	--

**

** 650 Lumens are the default, unless otherwise requested / specified.



PROJECT NAME:

PROJECT LOCATION:

Please fill out the form

A	B	C	D	E	F	G1	G2	H	I	J
LIGHTPAPER	FLEXIBLE	LED CHIP TYPE	INDOOR + LED QTY	COLOR TEMP OPTIONS	VOLTAGE	ILLUMINATED AREA	LIGHTPAPER TYPE	5-DIGIT PROJECT #	REVISION #Z	
PPR	S	2835	150	2700K	24	G1xG2	DIFF650	YYYYY	REVZ	

1. What is the Application the LightPaper will be used for?
 E.g.: Hospitality, Retail, Signage Etc.

2. What are the LightPaper backlighting?
 E.g.: Stone, Graphic, Glass, Acrylic Etc.

3. Are there any installation details to review?

4. Is there an existing Dimming or Lighting Control System?
 If so, please provide Representative with information of the Control system (specs, manufacturer, etc.)

Additional information: