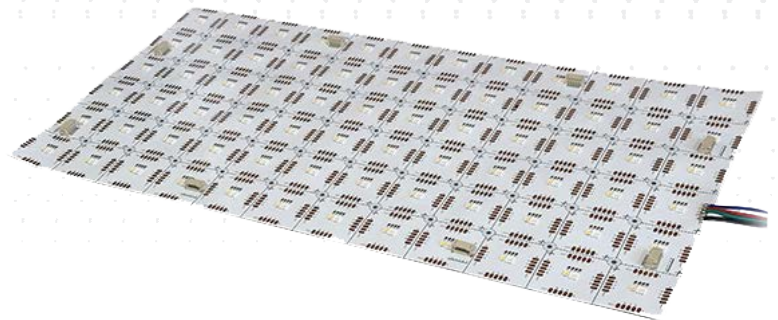
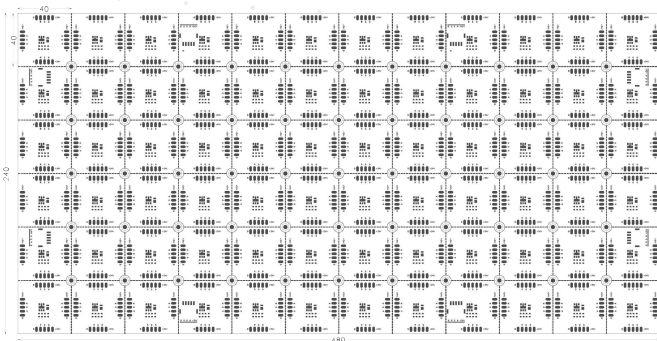


# RGBW LightPaper

- Thin, lightweight, flexible, cuttable light sheets
- Suited for shallow setback starting at 1/4"
- For walls, ceilings, curved structures and custom shapes
- Color Changing RGB plus dedicated white in 2700K, 3000K, 4000K or 6000K
- Multiple Lumen Packages and Wattages
- 90+ CRI



The versatility of RGBW eos LightPaper allows use in a large number of applications:



HOSPITALITY



RESIDENTIAL



COMMERCIAL INTERIOR



CUSTOM FIXTURES



MILLWORK



TASK LIGHTING



LOGOS AND SIGNAGE



COVE LIGHTING



RETAIL



BRANDING



ACCENT LIGHTING



HEALTHCARE

# General Specifications

## FLEXIBLE TECHNOLOGY :

LightPaper is versatile, flexible and thin LED technology that can wrap around curved surfaces or be cut into custom shapes

## PAPER SIZE :

Each sheet is 19" x 9.5" and seamlessly expandable via Molex® connectors up to 80W per driver. Can be cut at the factory or in the field into 1.57" squares.

## SETBACK :

RGBW LightPaper is suited for shallow setback starting at 1/4", depending on the transparency of the illuminated material; most can be evenly illuminated w/ 1 - 2" setback. We fully recommend creating a mock up prior to specifying the job. Contact your EOS agent for assistance.

## LONG LIFE :

Over 50,000 hours = Nearly 12 years based on 12 hours a day. Once installed, LightPaper is virtually maintenance free.

## CRI :

90+ CRI

## POWER OPTIONS :

24VDC Adapter

## DRIVER INPUT VOLTAGE :

24VDC/120V-277V Universal AC Input

## LUMENS & WATTAGE (See page 3):

4W - 15W per sq ft

150 - 650 Lumens per sq ft

## DIMMABLE :

LightPaper is dimmable when matched with Dimmable Power Supplies. (DMX/DALI)

## LEDs :

ANSI Binned LEDs from Tier 1 Suppliers  
LED CRI > 90+  
LED CRT - RGB+2700K, RGB+3000K, RGB+4000K, RGB+6000K

## WIRE GAUGE:

22 AWG Wire

## DAMP LOCATION :

LightPaper is Damp Location Rated when driven with a Class 2 Power Supply

## HOSPITAL AND MRI SAFE :

The system contains non-ferrous materials, making LightPaper safe for MRI suites. The LightPaper Power supply must be installed remotely, up to 30 feet from the application.

## SERVICE AND INSTALLATION :

LightPaper is field serviceable, and can be pre-cut by our production team to customer specifications.

## LIMITED WARRANTY :

3 Years - See Website for full details.



Up to 15W, >650 Lumens per sq ft for signage & architecturally decorative objects



Dimmable, energy-efficient and cool-running



Lightweight, Easy-Install



Quick, easy installation in indoor applications



## APPROVALS AND CERTIFICATIONS:

The LightPaper System is UL listed for Architectural applications and UL recognized for signage. All power supplies are UL / ETL listed.



DIMMABLE



DAMP LOCATION



LISTED  
LOW VOLTAGE LUMINAIRE  
E480527

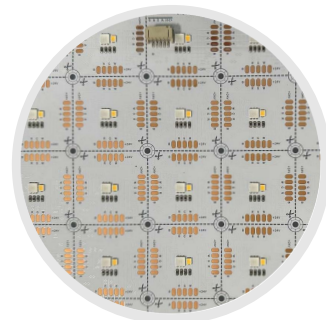
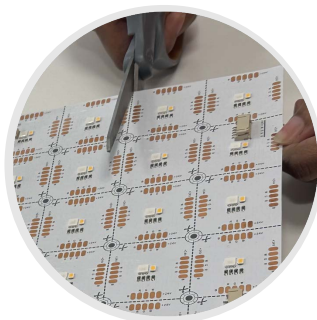


E467626



RoHS

Molex is a registered trademark of Molex, LLC.





# Product Specification Ordering Form

NAME: PROJECT NAME: ADDRESS:

PHONE: PROJECT LOCATION: CITY:

EMAIL: ANTICIPATED DELIVERY DATE: ZIP CODE:

COMPANY NAME: PROJECT SPECIFIER: RUSH PROJECT:  Yes  No

A	B	C	D	E	F	G1	G2	H	I	J
LIGHTPAPER	FLEXIBLE	LED CHIP TYPE	INDOOR + LED QTY	COLOR TEMP	VOLTAGE	ILLUMINATED AREA LENGTH X HEIGHT (IN INCHES)		LIGHTPAPER TYPE	5-DIGIT PROJECT #	REVISION # Z
PPR	S	5050	1144	RGB-2700K	24	G1xG2		RGBW450	YYYYY	REVZ

### A MATERIAL

PPR- LightPaper

### B RIGIDITY

S- Flexible

### C LED CHIP TYPE

5050 - Chip Type

### D LED QTY

I - Damp Location/Indoor  
144 - LED Chips per Sheet

### E COLOR TEMP

RGB-2700K - RGB + 2700K  
RGB-3000K - RGB + 3000K  
RGB-4000K - RGB + 4000K  
RGB-6000K - RGB + 6000K

### F VOLTAGE

24- 24VDC (w/ UNV 120-277V Driver)

### G ILLUMINATED AREA

G1 - Length in inches  
G2 - Height in inches

### H LIGHTPAPER TYPE

RGBW - RGBW w/ lumen  
packages indicated

### I PROJECT #

YYYYY - 5-Digit Project #

### J REVISION #

REVZ - REVISION # Z



PROJECT NAME:

PROJECT LOCATION:

# Please fill out the form

A	B	C	D	E	F	G1	G2	H	I	J
LIGHTPAPER	FLEXIBLE	LED CHIP TYPE	INDOOR + LED QTY	COLOR TEMP OPTIONS	VOLTAGE	ILLUMINATED AREA	LIGHTPAPER TYPE	5-DIGIT PROJECT #	REVISION #Z	
PPR	S	5050	I144	RGB-2700K	24	G1xG2	RGBW450	YYYYY	REVZ	

**1. What is the Application the LightPaper will be used for?**  
E.g.: Hospitality, Retail, Signage Etc.

**2. What are the LightPaper backlighting?**  
E.g.: Stone, Graphic, Glass, Acrylic Etc.

**3. Are there any installation details to review?**

**4. Is there an existing Dimming or Lighting Control System?**  
If so, please provide Representative with information of the Control system (specs, manufacturer, etc.)

**Additional information:**